

LANDSCAPEDEPOT Urban Ireland

Landscape Products for Sustainable Cities

DALL'O GAZON Heavy Duty Grass Stabilization Grids

Description:

In high traffic areas, Dall'O Gazon preserves the grass by preventing the root zones from compacting. The shape is specifically designed to allow for perfect rooting of the grass (90% of the surface of the slab) and gives 100% coverage. The slabs high resistance (400 tonnes per square metre) and flexibility allows Dall'O Gazon to adapt to the heaviest vehicles and the most difficult terrains.

Applications:

- Car parks
- Roads and access roads for cars
- Emergency services (including Fire trucks)
- Accessways, buses...
- Pedestrian routes
- Stabilisation of embankments and river banks...



Having maximum space for the roots will guarantee a durable and resistant lawn!

LANDSCAPEDEPOT Urban Ireland

W: landscapedepoturbanireland.ie

E: Info@landscapedepoturbanireland.ie

Ph: 01 4512608

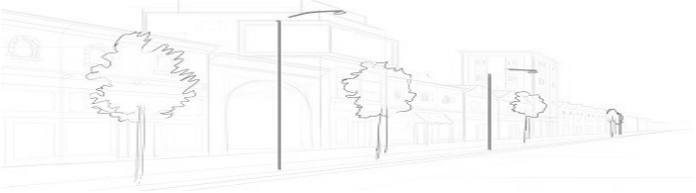
Landscape Depot Urban Ireland

Bally mana Lane

Kiltipper

Dublin 24

D24 T9FE



LANDSCAPEDEPOT Urban Ireland

Landscape Products for Sustainable Cities

DALL'O GAZON Heavy Duty Grass Stabilization Grids

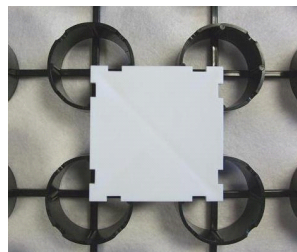
REINFORCEMENT OF NATURAL GRASS

Advantages:

- Aerated cells: allows free root development and complete coverage of the lawn
- Prevents soil compacting over 3cm
- Flexible, adapts to the terrain
- 50 x 50 cm snap-in tiles (pre-assembled to 1m sq)
- 100% recycled plastic—UV treated
- Roots grow laterally without any obstacles. Helps the establishment of the tillering tray
- Maximum strength: up to 400 T per sq metre. No weak points
- Easy and quick to lay approx. 30 sq m /hour/person

Environmental Benefits:

- 100% permeable
- Reduces runoff
- 100% Recycled
- Controls erosion



Dall'O Plot

Signalling/marketing plot to clip onto the Plantcoprotec Dall'O Plot tiles.

Colour: White

Size: 8,2 x 8,2 cm

Applications

Parking spaces

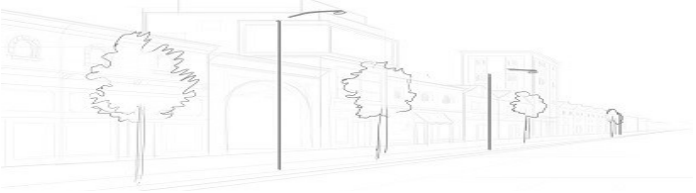
LANDSCAPEDEPOT Urban Ireland

W: landscapedepoturbanireland.ie

E: Info@landscapedepoturbanireland.ie

Ph: 01 4512608

Landscape Depot Urban Ireland
Bally mana Lane
Kiltipper
Dublin 24
D24 T9FE



LANDSCAPEDEPOT Urban Ireland

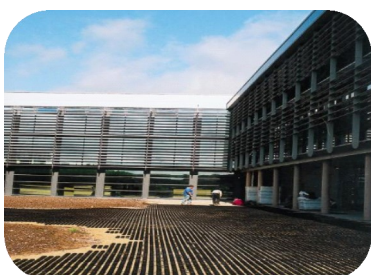
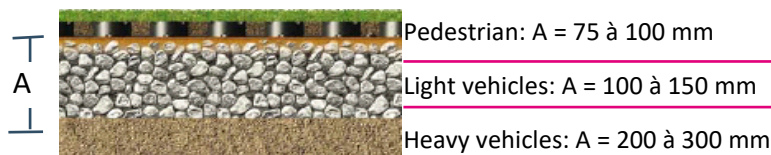
Landscape Products for Sustainable Cities

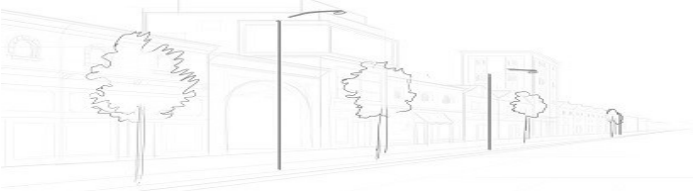
DALL'O GAZON Heavy Duty Grass Stabilization Grids

HOW TO USE:

1. Prepare the ground according to the height of the supporting base (see table) and install a geotextile or an above-ground fabric.
2. On top of the geotextile, place the supporting base (gravel mixture) and compact it well. This layer should be 40/50 mm below the finished level.
3. Add a thin layer of sand (20 to 30 mm) and apply water so that it fills the holes left between the gravel for the first 50 mm.
4. Spread a layer of "Hydro Retainer" at about 4 kg per 100 m² to conserve and release moisture during the root installation period.
5. Install the Dall'O Gazon and make sure that they are well connected. Caution! Always keep an expansion strip of about 5 to 10 cm around the edges of the Dall'O Gazon.
6. Make the necessary cuts (planting, installations...) and spread phosphorus fertilizer granules type 10.15.10 or 8.12.8 at a rate of 7 kg per 100 m² in the empty cells.
7. For half the height of the slabs (approx. 15 mm), apply a mixture of 70% sand and 30% compost with a pH between 6.5 and 7.2, ideal for the root zone.
8. Spread grass seed, preferably Rhizomatous Tall Fescue, at 5 kg per 100 m².
9. Finish filling in the tiles using a wide broom so that the top of the Dall'O Gazon is visible.
10. A new application of 8.12.8 or 10.15.10 fertilizer can then be applied at 7 kg per 100 m². The lawn should not be mown to less than 30 mm.

Height of the supporting base





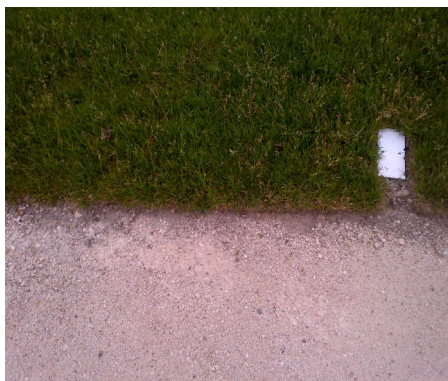
LANDSCAPEDEPOT Urban Ireland

Landscape Products for Sustainable Cities

DALL'O GAZON Heavy Duty Grass Stabilization Grids

TURF INTEGRATED INTO TILES:

1. The widely spaced cells of the Dall'O Gazon tiles allow the direct integration of turf. This simple and fast technique avoids the handling and logistics of pre-seeded tiles.
2. Prepare the ground according to the height of the supporting base (see table) and install a geotextile or an above-ground fabric.
3. On top of the geotextile, place the supporting base (gravel mixture) and compact it well. This layer should be 40/50 mm below the finished level.
4. Add a thin layer of sand (20 to 30 mm) and apply water so that it fills the holes left between the gravel for the first 50 mm.
5. Spread a layer of "Hydro Retainer" at about 4 kg per 100 m² to conserve and release moisture during the root installation period.
6. Install the Plantcoprotec Dall'O Gazon and make sure that they are well connected. Caution! Always keep an expansion strip of about 5 to 10 cm around the edges of the Plantcoprotec Dall'O Gazon.
7. Apply a mixture of 70 % sand and 30 % compost with a pH value of 6.5 to 7.2, which is ideal for the root zone at the bottom of the slab and depending on the height of the turf.
8. Unroll the turf onto the tiles and water it well to assist the insertion into the cells.
9. Use a roller or a small tamping machine to insert the turf into the tiles up to the level of the cells.



LANDSCAPEDEPOT Urban Ireland

W: landscapedepoturbanireland.ie
E: Info@landscapedepoturbanireland.ie
Ph: 01 4512608

Landscape Depot Urban Ireland
Bally mana Lane
Kiltipper
Dublin 24
D24 T9FE